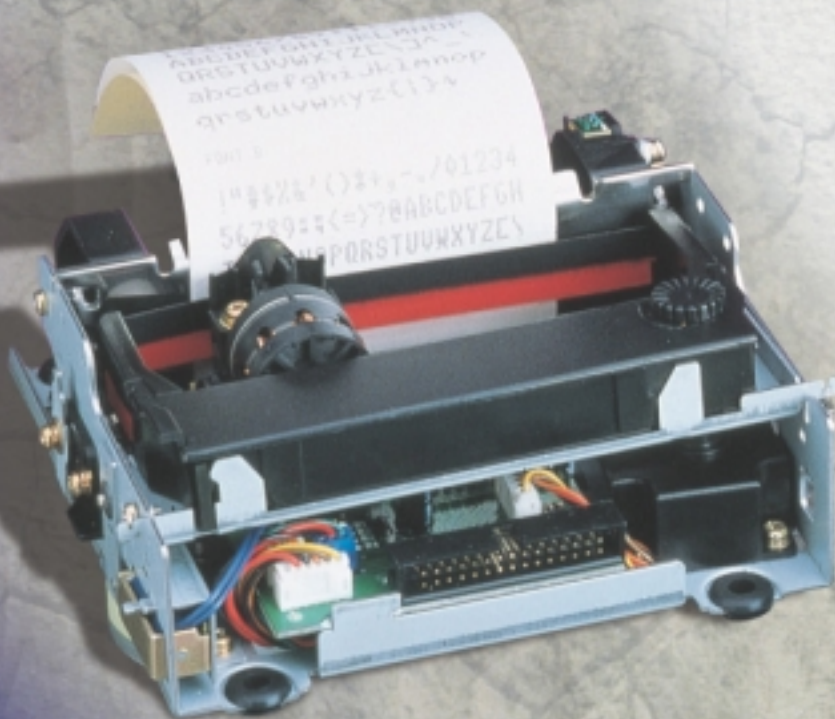


# OMNI *print* i n c .

## OPC200



### Product Features

- 9 Pin Print Head
- Bi-Directional/Logic Seeking
- Long Head Life
- 5 LPS Printing Speed
- Graphics
- Auto Paper Loading
- Paper Out Sensor
- Auto Paper Cutter

### Applications

- Point Of Sale
- Kiosk
- Industrial

At speeds of 5.0 lines per second the OPC200 sets a new standard for cost effective, high performance design.

# OPC200



**OB200**



**PP-300**



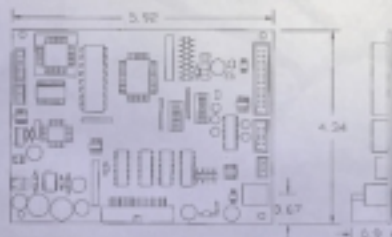
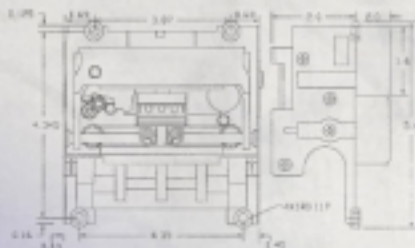
**ERC-38**



**OPC8000**

<b>MODEL</b>		OPC200
<b>PRINT METHOD</b>		IMPACT DOT MATRIX, 9 PIN HEAD
<b>PRINT DIRECTION</b>		BI-DIRECTIONAL, LOGIC SEEKING
<b>NO. OF COLUMNS</b>		FONT "A" 33/35 FONT "B" 40/42
<b>FONT SIZE</b>		FONT "A" 12 CPI, FONT "B" 15 CPI
<b>LINE SPACING</b>		n = 144
<b>PRINTING WIDTH</b>		2.6", 320 DOTS
<b>PRINT SPEED</b>		5 LINES PER SECOND
<b>INK RIBBON</b>		ERC - 23, ERC - 38 PURPLE, BLACK, RED AND BLACK
<b>PAPER</b>	Media	ROLL PAPER
	Width	3" MAX
	Diameter	UP TO 6" INCHES
	Copies	3 PLY MAX (0.008" THICK)
<b>DATA BUFFER</b>		16 K BYTES
<b>PERIPHERAL DRIVER</b>		24V - 1 AMP MAX
<b>INTERFACE</b>		RS-232C SERIAL OR CENTRONICS PARALLEL
<b>EMULATION'S</b>		EPSON™ TM-U200, CITIZEN™ iDP-3540 STAR™ SP 200, VERIFONE™ P900
<b>POWER SUPPLY</b>		24 VDC, 1.5 AMPS
<b>OPERATING CONDITION (c)</b>		5° TO 40 °, 10% TO 80% RH
<b>STORAGE CONDITION (c)</b>		0° TO 60°, 5% TO 95% RH
<b>RELIABILITY</b>	MCBF	5 MILLION LINES
	Printhead	150 MILLION CHARACTERS
<b>DIMENSIONS (INCHES W x D x H)</b>		5.75 x 5.25 x 2.87
<b>WEIGHT (lbs)</b>		1.5

## External Dimensions



OMNIPrint, Inc.  
 14 Chrysler, Irvine, CA 92618, USA  
 Telephone : (949) 457-0229  
 Fax : (949) 457-9016  
[www.omniprintinc.com](http://www.omniprintinc.com)

